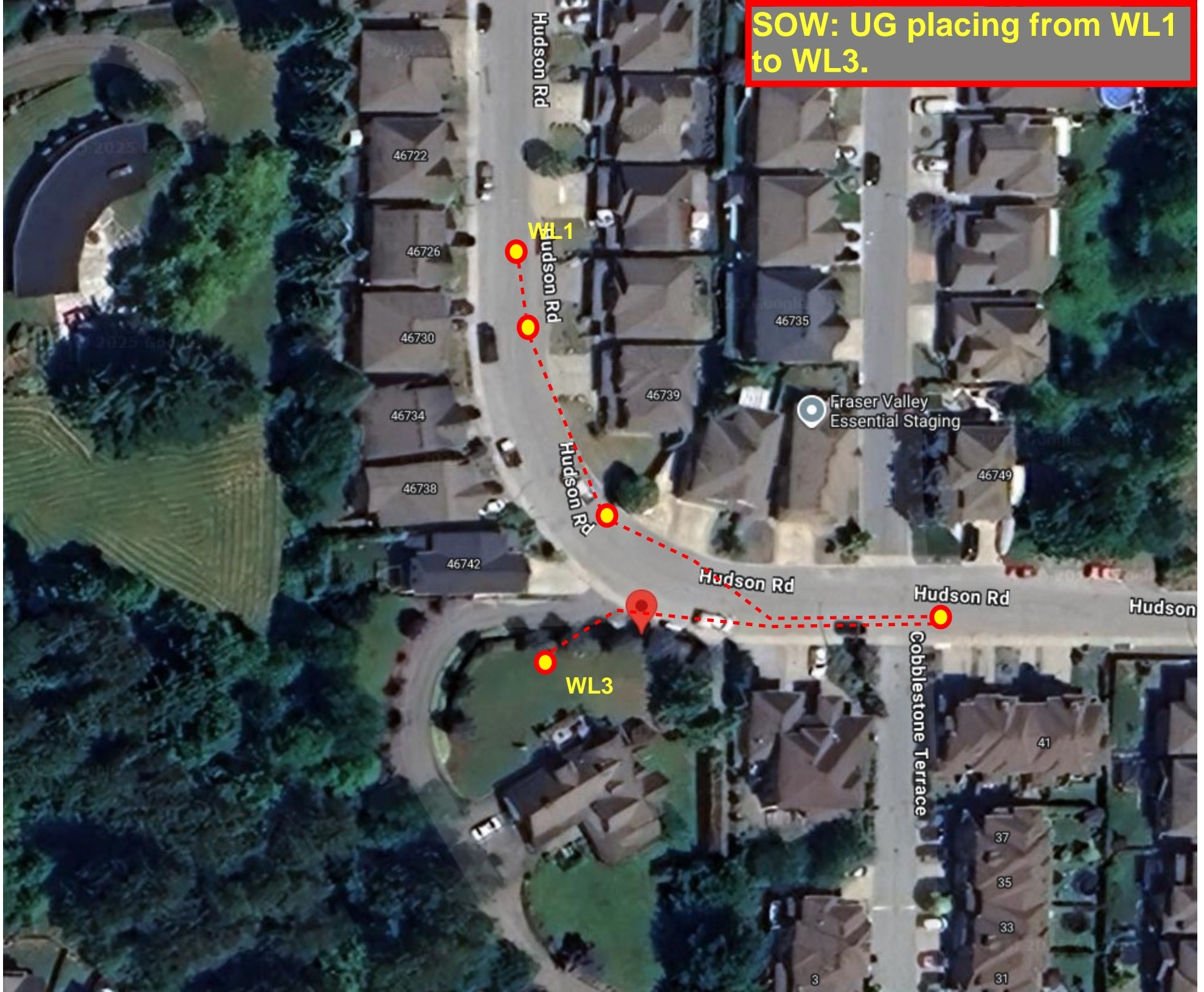


SOW: UG placing from WL1 to WL3.





ANE Traffic Control LTD	PROJECT: MTI UNDERGROUND PLACING	TRAFFIC CONTROL: ANE TRAFFIC CONTROL LTD	
	CONTRACTOR: MOTT COMMUNICATIONS	CONTACT: Jorge Necas 1-604-314-2968	
	START DATE: TBD	HOURS: TBD	REVISION # 000
	DRAWN BY: Sabrina Newman	DWG # 001	DATE SUBMITTED : 12/29/2025

Date: 12/29/25

Comments:

- FIGURE : 7.5/7.6
- 3.2M LANE WIDTH TO BE MAINTAINED AT ALL TIMES.
- TCP's will assist pedestrians, cyclists and first responders when required.
- Business/Residential entrances/driveways to be maintained at all times.
- Signage and cones to be removed each day after work hours.
- TCP'S will remain at all exits and driveways to help pedestrians and cyclists safely through the work zone.
- Traffic control plan based on 50KM per hour.
- All traffic control devices and signs to comply with the latest MOTI Manual for work on roadways.

Legend

- C-018-1A
- C-018-8L Construction Ahead
- C-053
- C-132
- Cone
- P-001
- Traffic Controller
- Work Area

THIS ONE IS ACCESSIBLE THRU PRIVATE DRIVEWAY

